

Load cell ZAP

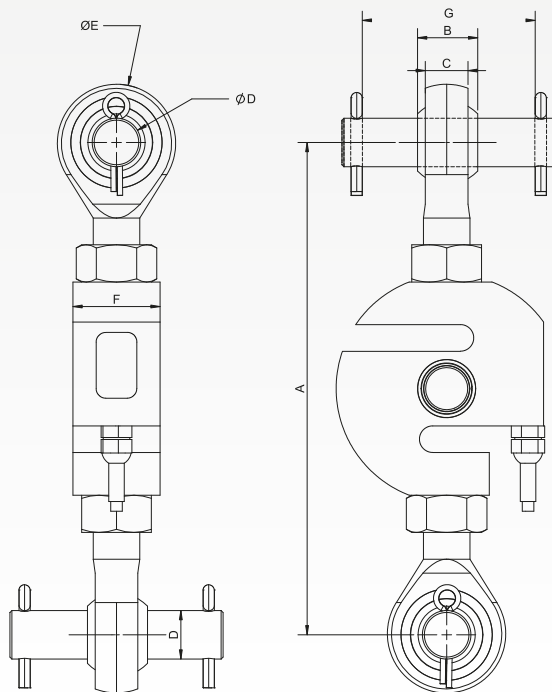
5 t - 7.5 t



Description

- ▶ Traction load cell in stainless steel
- ▶ Protection rating IP68
- ▶ Approved up to 3,000 d OIML
- ▶ For traction weighing applications
- ▶ Current-aligned signal for use with multiple load cells (reduces the setting time of the load cell chain)

Schema/Wiring



Dimensions

Tapping	Load cell	A	B	C	D	E	F	G
M24x2	5t	240 - 254	31	22	25	60	45	89
M30x2	7.5t	270 - 294	37	25	30	70	60	98

Wiring

+ power	+ signal	- signal	- power	+ ref.	- ref.
brown	yellow	white	green	grey	pink

⚠ Provide a safety system in the event of breakage of the load cell.

REMINDER: All load cells in a given installation must be identical.

All dimensions in mm

Options/Accessories

Options

ATEX version

METROLOGICAL DATA		ZAP 5t - 7.5 t	
Rated capacity (Cn)	5 - 7.5	t	
Combined error	± 0.017	% Cn	
Temperature effect on sensitivity	± 0.0014	% Cn/ 0 C	
Creep error (30 min)		± 0.024	
LEGAL METROLOGY OIML R60			
Accuracy class	C3		
Maximum capacity (Emax)	5 - 7.5	t	
Max. number of LC intervals (nmax)	3,000	d OIML	
Min. verification scale interval (Vmin)	Emax/10000	kg	
Z = Emax/ (2xDR)	3,000		
ELECTRICAL DATA			
Supply voltage range	1... 15	V	
Rated output at Cn	2	mV/V	
Current adjustment	± 0.1	% Cn	
Zero balance	± 10	% Cn	
Input impedance (resistance)	385 ± 20	Ω	
Output impedance (resistance)	350 ± 5	Ω	
Insulation resistance	5,000	MΩ /50V	
GENERAL			
Safe load limit	150	% Emax	
Operating temperature range	-20 ... +60	°C	
Compensated temperature range	-10 ... +40	°C	
Protection rating	IP68	EN 60529	
Material	Stainless steel		
Cable length	10	m	
Net weight	ZAP 5 t: 4.9/ZAP 7.5 t: 7	kg	

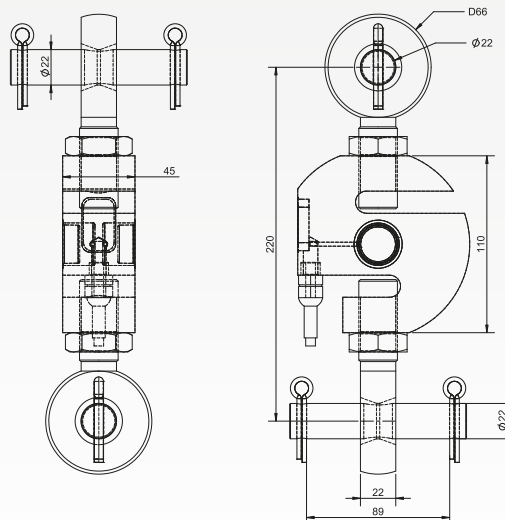
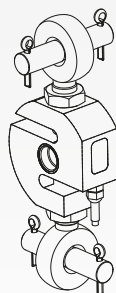
Options

Kit mechanically compatible for:

TCP - 5 tonnes

TAP - 5 tonnes

TAP 2 - 5 tonnes



⚠ Provide a safety system in the event of breakage of the load cell.

WARNING: the assembly is mechanically compatible only.
The upper and lower pins must form an angle of 90°.

REMINDER: All load cells in a given installation must be identical.

⚡ Atex option

ARPEGE MASTERK

Bâtiment n°6 - 15, rue du Dauphiné
CS 40216 - 69808 St PRIEST - FRANCE
Tél : +33 (0)4 72 22 92 22
Fax : +33 (0)4 72 22 93 45
marketing@masterk.com

Our product factsheets
are available for download
at our website
www.masterk.com

Company Registration: 971 506 480 RCS LYON
SIC registration code: APE 2829A French VAT: FR 28 971 506 480

Your contact information